

AdvanTex® Treatment Systems

AX-Max™

Manufactured by **Orengo Systems**®, Inc.



This full-sized AdvanTex® AX-Max™ wastewater system was installed at a 50-site campground in the LaPine State Park, LaPine, Oregon, to handle design flows of 7,500 gpd (28.4 m³/day).

Decentralized Wastewater Treatment for Commercial Properties and Communities

Orengo Systems®, Inc.

814 Airway Avenue, Sutherlin, Oregon, USA 97479
Toll-Free: 800-348-9843 • +1-541-459-4449 • www.orengo.com

Applications:

- Municipal systems
- Subdivisions, apartments
- Golf course developments, resorts
- Manufactured home parks
- Parks, RV parks, campgrounds
- Schools, churches, businesses
- Rest areas, truck stops

AdvanTex® AX-Max™ Treatment System

Reliable, Energy-Efficient Wastewater Treatment

Everywhere!



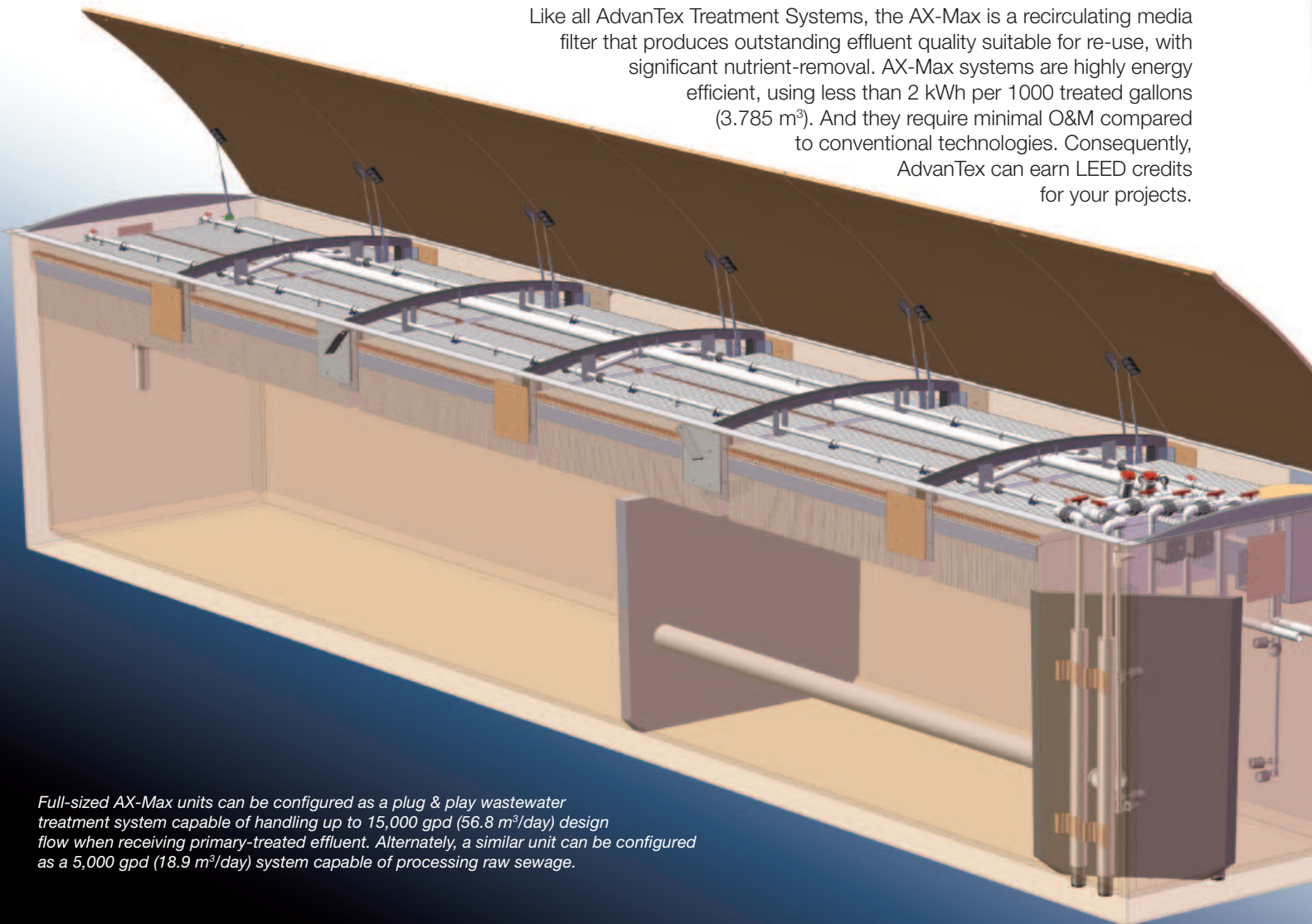
The Yakama Nations Housing Authority in Washington state added five AdvanTex® AX-Max units (background) to its ten AdvanTex AX-100 units, increasing the capacity of its wastewater system by 50%. Photo courtesy of Fextex Systems, Inc.

For nearly 15 years, Orenco's AdvanTex® Treatment Systems have been providing reliable, energy-efficient wastewater treatment inside and outside the urban core. AdvanTex textile filter technology has been winning awards and coming out on top in field trials and demo projects, all over the world.

Orenco's newest product in the AdvanTex line is the AX-Max™: a completely-integrated, fully-plumbed, and compact wastewater treatment plant that's ideal for commercial properties and communities. It's also ideal for projects with strict discharge limits, limited budgets, and part-time operators.

A Sustainable Solution for Wastewater Treatment

Like all AdvanTex Treatment Systems, the AX-Max is a recirculating media filter that produces outstanding effluent quality suitable for re-use, with significant nutrient-removal. AX-Max systems are highly energy efficient, using less than 2 kWh per 1000 treated gallons (3.785 m³). And they require minimal O&M compared to conventional technologies. Consequently, AdvanTex can earn LEED credits for your projects.



Full-sized AX-Max units can be configured as a plug & play wastewater treatment system capable of handling up to 15,000 gpd (56.8 m³/day) design flow when receiving primary-treated effluent. Alternately, a similar unit can be configured as a 5,000 gpd (18.9 m³/day) system capable of processing raw sewage.

AdvanTex® AX-Max™ Treatment System



Set, Plumb, Wire, and Go

The AX-Max is pre-plumbed and easy to install, so AX-Max projects can meet the tightest deadlines. The entire system — including treatment, recirculation, and discharge — is built inside an insulated fiberglass tank that ranges from 14'-42' (4.3-12.8 m) in length. AX-Max's can be installed above-ground — for maximum versatility in temporary or variable-flow situations — or in-ground. They can also be installed individually or in multi-tank arrays, treating up to 1 MGD (3,800 m³/day).

For Every Climate and Condition

AX-Max systems provide excellent treatment anywhere, and they have been installed all over the world. For example, AX-Max systems have been installed in-ground at Malibu's famous beach parks, the Boy Scout's National Jamboree site in West Virginia, and New Zealand's resort at Glendhu Bay. Two more were recently installed in-ground in Soyo, Africa, to serve a new hospital. Other AX-Max systems have been installed above-ground on top of Alaska's frozen tundra and St. Lucia's volcanic rock. Still more have been installed above-ground in mining camps from Alberta to Texas and, in the Midwest, at a U.S. Department of Defense demo site.



Units range from 14'-42' in length.
This 21' unit is ideal for lower flows.

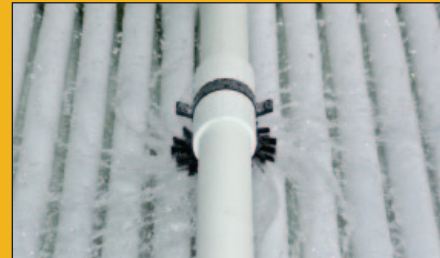
Benefits

- Containerized, fully-plumbed
- Capable of meeting stringent effluent limits
~ Re-use quality effluent
~ Significant reductions in ammonia, total nitrogen
- Portable, versatile, and compact
- Above-ground or in-ground installation
- Easy to set
- Simple to operate
- Low energy usage: <2 kWh per 1000 treated gal. (<2 kWh per 3.785 m³)



Textile Treatment Media

The treatment medium is a uniform, engineered textile. AdvanTex textile is easy to clean and allows loading rates as high as 50 gpd/ft² (2000 L/day/m²).



Effluent Distribution

High-quality, low horsepower pumps micro-dose the treatment media at regular intervals, and proprietary spin nozzles efficiently distribute the effluent, optimizing treatment.



Telemetry Controls

Orenco's telemetry-enabled control panels use a dedicated phone line or ethernet connection, ensuring 24/7 monitoring and real-time remote control.

AdvanTex® AX-Max™ Treatment System

Carefully Engineered by Orenco

Orenco Systems has been researching, designing, manufacturing, and selling leading-edge products for small-scale wastewater treatment systems since 1981. The company has grown to become an industry leader, with about 250 employees and 300 points of distribution in North America, Australasia, Europe, Africa, and Southwest Asia. Our systems have been installed in more than 60 countries around the world.

Orenco maintains an environmental lab and employs dozens of civil, electrical, mechanical, and manufacturing engineers, as well as wastewater treatment system operators. Orenco's technologies are based on sound scientific principles of chemistry, biology, mechanical structure, and hydraulics. As a result, our research appears in numerous publications and our engineers are regularly asked to give workshops and trainings.



Orenco®

Orenco Systems®, Incorporated

814 Airway Avenue
Sutherlin, OR 97479 USA
T: 800-348-9843
T: 541-459-4449
F: 541-459-2884

www.orenco.com

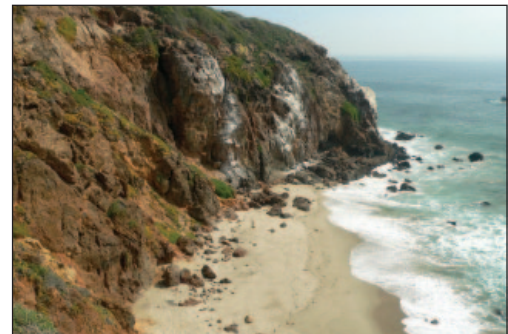
ABR-ATX-MAX-1
Rev. 1.2, © 10/13
Orenco Systems®, Inc.

Project Summary



Point Dume State Beach and Preserve, Southern California

In spring, 2011, Los Angeles County needed to quickly upgrade restrooms at Malibu's Point Dume State Beach in time for the long — and busy — Memorial Day weekend. The county's engineer specified three AX-Max's, one for each restroom, and the units were installed in a matter of days. Each unit was custom-painted to blend into the surrounding sand or asphalt. After disinfection, the treated effluent is dispersed right into the sand. Point Dume is part of a large-scale upgrade of L.A. County beach parks, virtually all of which include AdvanTex Treatment Systems of various sizes and configurations.



Fully Supported by Orenco

AdvanTex Treatment Systems are part of a comprehensive program that includes ...

- Designer, installer, and operator training
- Design assistance, technical specifications, and plan reviews
- Installation and operation manuals
- Lifetime technical support

Distributed by: